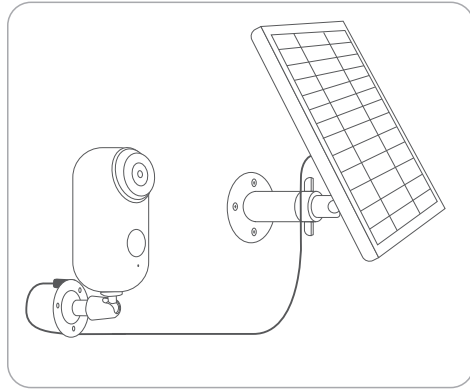


4. Connect to Camera

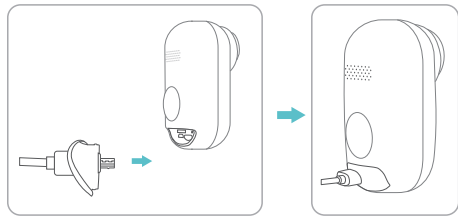


Connect the solar panel to Homcloud battery IP cam with the micro-USB connector.

Notes:

1. Make sure your solar panel is uncovered. The generating efficiency of solar panel drops if the panel is even partly covered.
2. Please tilt your solar panel at a certain angle thus there is no standing water or dust on it's surface.
3. Remove the dust or leaves on the panel regularly if there are.

5. Important



Make sure the camera is connected to the weatherproof cover tightly all the way.

Note:

The weatherproof cover is to protect your camera from water and dust. A loose connection may lead to a short-circuit.

4

6. Technical specification

Model:	Solar 2	Working Voltage:	5.3V max
Homcloud code:	ME-SP2	Working Current:	830mA max
Connector:	MicroUSB	Power:	5W max
Solar silicon :	Single Crystal Cell	Cable Length:	3m
Finished product size:	224*174*12.0mm	Cable spec:	22AWG Micro Cable

7. Declaration of conformity

Hereby, Life365 Italy S.p.A. declares that this wireless device complies with the essential requirements and other provisions correl of Directive 2014/53 / EU of the European Parliament and of the Advice. The declaration can be consulted on the website www.homcloud.com/doc.

"Homcloud" is a registered trademark of Life365 Italy S.p.A.



Imported by: Life365 Italy S.p.A. - European General Agency
Viale Roma 49/a, 47122 Forlì, Italy - Made in China

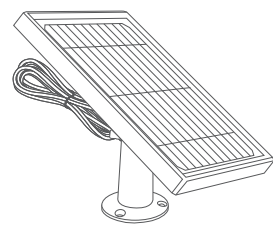
HOMCLOUD



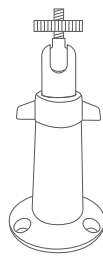
Homcloud Solar Panel Quick Start Guide

V1.01

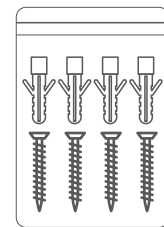
1. What's in the box



Solar Panel x1



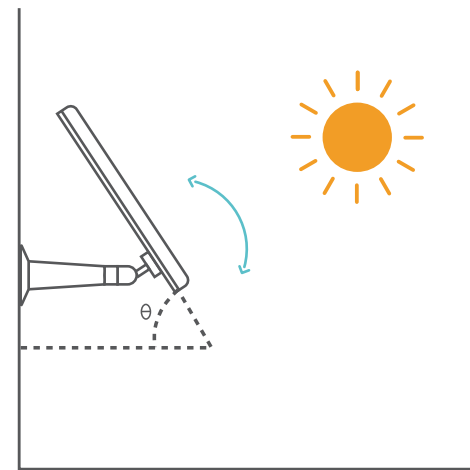
Bracket x1



Screw Package x1

1

2. Position



1. Select a position where the panel collects sunlight the most throughout the year.

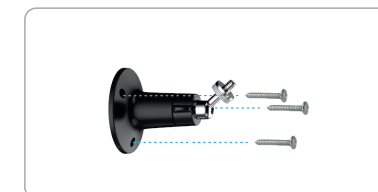
2. Adjust it to the ideal angle (Your local latitude +5°) towards the sun.

Note:

It takes only a few hours of direct sunlight that your camera can be powered up by our Homcloud solar panel. The amount of electricity that the solar panel can produce varies according to the weather, seasons, geographic locations, etc.

2

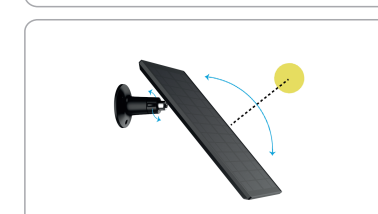
3. Installation



1. Mount the bracket on the position that you chose with the screws provided.



2. Fasten the solar panel onto the bracket's bolt-screw until solar panel is fixed.



3. a. Loosen the adjusting control on the bracket.
b. Adjust the angle of solar panel so that it can receive as much sunlight as possible.
c. Fasten the adjusting control to fix the angle of your solar panel.

Note: The threaded hole is on the back of the solar panel.

3

规格:140mm*110mm

材:157g粉

版本:V1.01