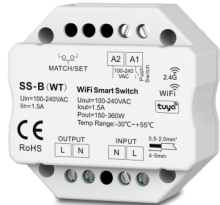


WiFi & RF Smart AC Switch

Model No./Homcloud Code: SK-SSB

Homcloud APP cloud control/Voice control/RF AC Switch/Push on/off/Wall junction box mounting



CE RoHS EMC LVD

Features

- WiFi + RF + AC push smart switch, without dimming function.
- To switch single color LED lamps, traditional incandescent and halogen lights.
- Homcloud/Smart Life APP cloud control, support on/off, delay turn on/off light and timer run function.
- Voice control, support Amazon&Google smart speaker.
- Compatibility with RF 2.4G dimming remote control.
- Each module /controller can also work as WiFi:RF converter, then use Homcloud/Smart Life APP to control one or more RF switch or controller synchronously.
- Connect with external push switch optional.
- Easy to be placed in standard wall junction box behind a push switch.
- Over-heat / Over-load protection, recover automatically.

Technical Parameters

Input and Output	
Input voltage	AC100-240V
Output voltage	AC100-240V
Output current	Max 1.5A
Output power	150-360W
Input signal	Tuya APP + RF + Push switch
RF Control distance	30m(Barrier-free space)

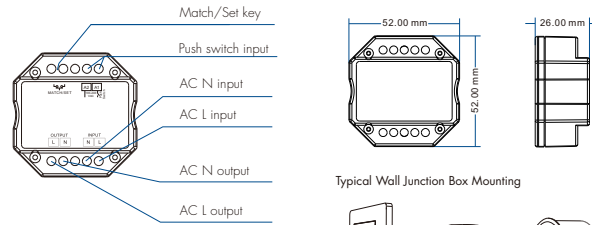
Environment	
Operation temperature	Ta: -30℃ ~ +55℃
Case temperature (Max.)	Tc: +85℃
IP rating	IP20

Safety and EMC	
EMC standard (EMC)	ETSI EN 301 489-1 V2.2.3 ETSI EN 301 489-17 V3.2.4
Safety standard(LVD)	EN 62368-1:2020+A11:2020
Radio Equipment(RED)	ETSI EN 300 328 V2.2.2
Certification	CE,EMC,LVD,RED

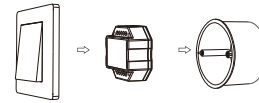
Emission	
Max Transmitting power	<20dBm

Weight	
Net weight	0.041kg
Gross weight	0.051kg

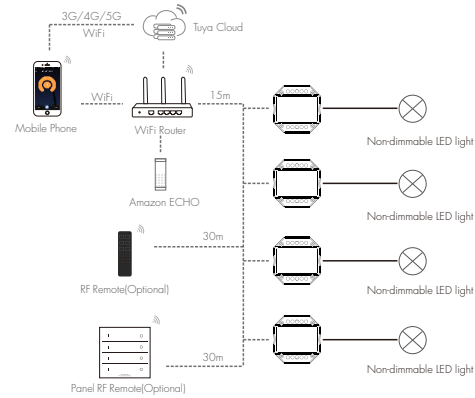
Mechanical Structures and Installations



Typical Wall Junction Box Mounting



System wiring



— Wired connection
- - - - - Wireless connection

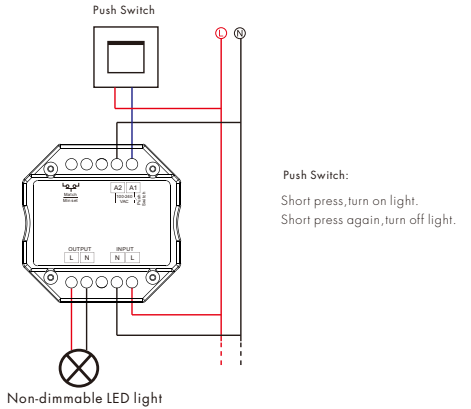
Note:

1. The above distance is measured in spacious (no obstacle) environment, Please refer to the actual test distance before installation.
2. Please check if the WiFi router net in 2.4G band, the 5G band is not available, and do not hide your router network.
3. Please keep the distance between wifi devices and router close, and check the WiFi signals.

Wiring diagram

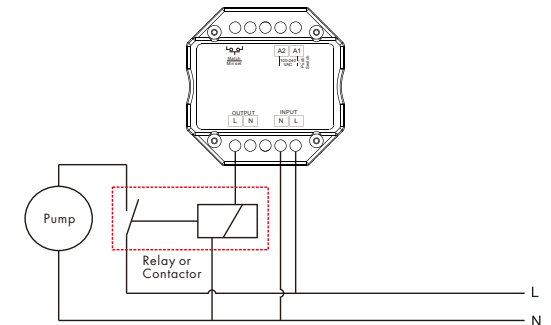
Caution: Please carefully ensure all wire connections and polarities are correct and secure before applying power, otherwise this controller will be damaged.

- Please contact a professional technician to install the product according to drawings and instructions.
- Keep out of the reach of childrens and away from water, dumpo or a wet environment.
- Check the ratings given in the instructions and on the product to make sure it is suitable for your application.
- Installer must be a trained experienced service technician or electrician.
- Do not disassemble open or repair the product.



Note:

An additional AC relay or contactor is needed when total input current of the load (such as pump) is higher than 1.5A.



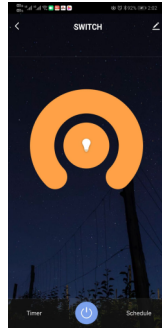
Homcloud App Download and registration

Download Homcloud App from App Store or Google Play and register a new Account.
Important: our App only supports 2.4ghz Wi-Fi networks IEEE 802.11 b/g/n

Homcloud APP Network connection and operation

CONFIGURATION:

- 1) Press and hold Match/Set key for 2s, or push twice Match/Set key fastly until the blue LED indicator flash fastly. (EZ Mode)
- 1b) if point 1 fails, use AP Mode: Press and hold Match/Set key for 5s: Clear previous network connection, enter AP config mode, the blue LED indicator flash slowly. (AP Mode)
- 2) Open the Homcloud App and press "Add Device" or "+" in the upper right corner to add the device and select the correct device to start the pairing process.
- 3) Follow the instructions on the App, giving all the confirmations needed.
- 4) Choose Name and house position if you wish, then start using the device.



Homcloud Switch module match RF remote control (Optional)

End user can choose the suitable match/delete ways. Two options are offered for selection:

Use the controller's Match key

Match:
Short press match key of controller/wifi module immediately press on/off key (single zone remote) or zone key (multiple zone remote) on the remote.

Delete:
Press and hold match key of controller/module for 15s to delete all match,
The light blinks 5 times means all matched remotes were deleted.

Use Power Restart

Match:
Switch off the power of controller/wifi module, then switch on power, repeat again,
Immediately short press on/off key (single zone remote) or zone key (multiple zone remote) 3 times on the remote.
The light blinks 3 times means match is successful.

Delete:
Switch off the power of controller/wifi module then switch on power, repeat again, Immediately short press on/off key (single zone remote) or zone key (multiple zone remote) 5 times on the remote. The light blinks 5 times means all matched remotes were deleted.

Homcloud Switch module work as WiFi-RF converter to match other RF switch or controller

End user can choose the suitable match/delete ways. Two options are offered for selection:

Use the controller's Match key

Match:
Short press match key of the controller, immediately press on/off key on the Homcloud/Smart Life APP. The LED indicator fast flash a few times means match is successful.

Delete:
Press and hold match key of the controller for 10s, The LED indicator fast flash a few times means match was deleted.

Use Power Restart

Match:
Switch off the power of the controller, then switch on power, repeat again,
Immediately short press on/off key 3 times on the Homcloud/Smart Life APP. The light blinks 3 times means match is successful.

Delete:
Switch off the power of the controller, then switch on power, repeat again,
Immediately short press on/off key 5 times on the Homcloud/Smart Life APP. The light blinks 5 times means match was deleted.

Light on/off fade time

Switch off the power, then switch on power, repeat again.
Immediately short press match key 3 times, the light on/off time will change between 3s and 0.5s.

Integration with Alexa and Google

Download and install Google Home or Amazon Alexa App and control your devices with your voice, with smart speakers or directly with your smartphone.

IMPORTANT: if you want to link the homcloud App to Google Home or to the Amazon Alexa App, you need to select **"SMART LIFE"** App between the list of Google Home Partners or Amazon Alexa Skills.
After that passage the user will be automatically directed to the Homcloud App.
There is NO NEED to download the Smart Life App, only the Homcloud App is needed.

Declaration of Conformity

Hereby, Life365 Italy S.p.A. declares that this wireless device complies with the essential requirements and other related provisions of Directive 2014/53 / EU of the European Parliament and of the Council. The declaration can be consulted on the website www.homcloud.com/doc.

"Homcloud" is a registered trademark of Life365 Italy S.p.A.

Imported by Life365 Italy S.P.A. - European General Agency
Viale Roma 49/a 47122 Forlì Italy - Made in China

Environmental information

This product may contain substances that can be harmful to the environment and human health if it is not disposed of properly. We therefore provide you with the following information to avoid the release of these substances and to improve the use of natural resources. Electric and electronic equipment must not be disposed of with normal urban waste but must be sent to separate collection for their correct treatment. The crossed-out bid symbol, affixed to the product and on this page reminds you of the need to dispose, reminds the product to end of his life. In this way it is possible to avoid that a non-specific treatment of the substances contained in these products, or an improper use of parts of them, can lead to harmful consequences for the environment and human health. It also contributes to the recovery, recycling and reuse of many of the materials contained in these products. For this purpose, the manufacturers and distributors of electrical and electronic equipment organize appropriate collection and disposal systems for the equipment. At the end of the product's life, turn to your appliance for information on how to collect. When purchasing this product, your device will also inform you of the possibility of returning a device for free at the end of its life provided that it is of an equivalent type and performs the same functions as the purchased product or, if the dimensions are not greater than 25 cm, the EEE can be returned without the obligation to purchase the equivalent product. Disposal of the product in a different way from what is described above will be subject to the penalties provided for by the national legislation in force in the country where it is disposed of. We also recommend that you take other measures favorable to the environment: recycle the internal and external packaging with which the product is supplied and properly dispose of used batteries (only if contained in the product). With the help it is possible to reduce the amount of natural resources used for the construction of electrical and electronic equipment, to minimize the use of discharged resources for the disposal of products and to improve the quality of life by avoiding substances that reduce the environment.

CUSTOMER SERVICE

If you need help scan the QR code below and message us on Whats'Up.



If you need Instruction manuals in other languages please scan QR code below.

